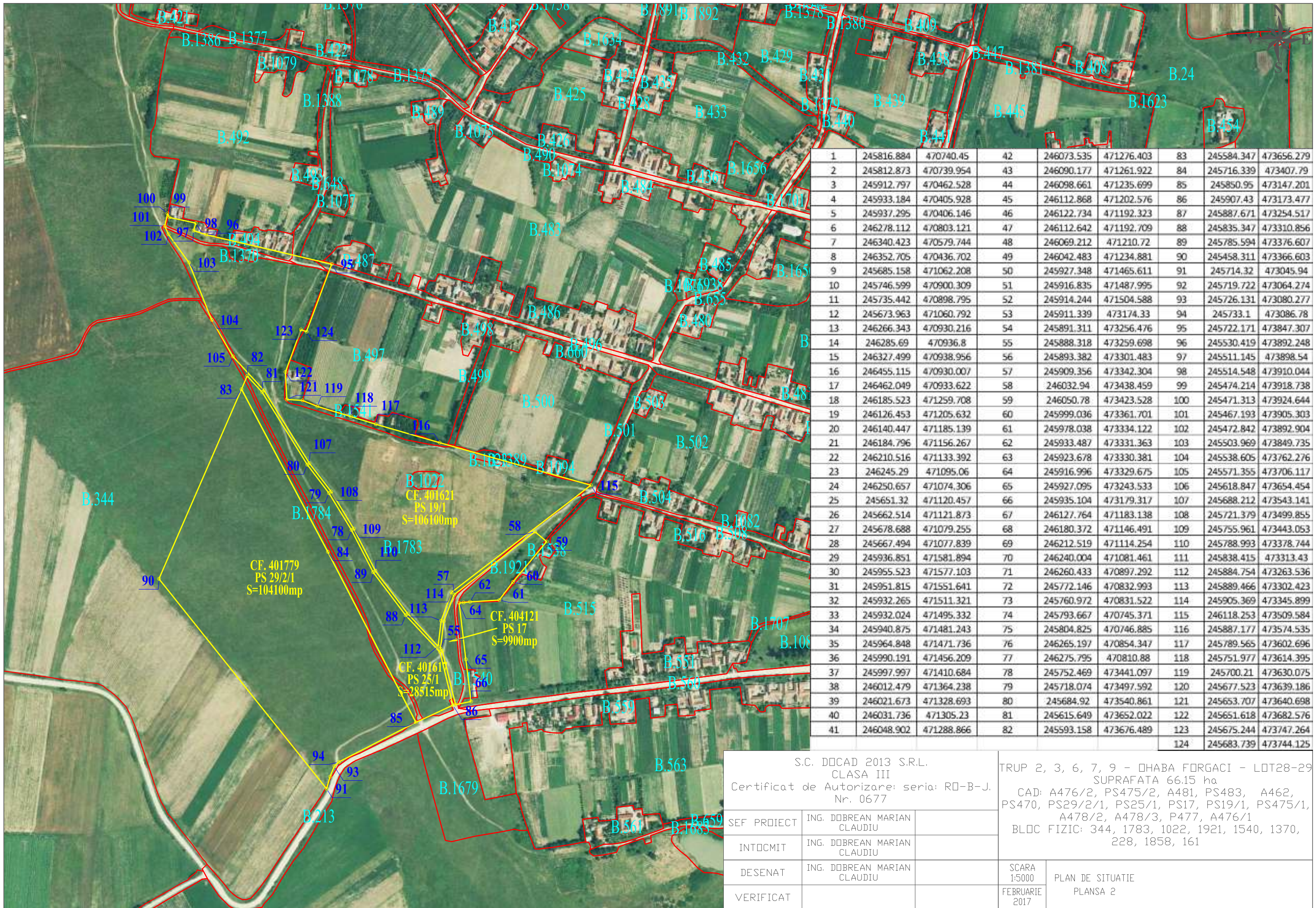


1	245816.884	470740.45	42	246073.535	471276.403	83	245584.347	473656.279
2	245812.873	470739.954	43	246090.177	471261.922	84	245716.339	473407.79
3	245912.797	470462.528	44	246098.661	471235.699	85	245850.95	473147.201
4	245933.184	470405.928	45	246112.868	471202.576	86	245907.43	473173.477
5	245937.295	470406.146	46	246122.734	471192.323	87	245887.671	473254.517
6	246278.112	470803.121	47	246112.642	471192.709	88	245835.347	473310.856
7	246340.423	470579.744	48	246069.212	471210.72	89	245785.594	473376.607
8	246352.705	470436.702	49	246042.483	471234.881	90	245458.311	473366.603
9	245685.158	471062.208	50	245927.348	471465.611	91	245714.32	473045.94
10	245746.599	470900.309	51	245916.835	471487.995	92	245719.722	473064.274
11	245735.442	470898.795	52	245914.244	471504.588	93	245726.131	473080.277
12	245673.963	471060.792	53	245911.339	473174.33	94	245733.1	473086.78
13	246266.343	470930.216	54	245891.311	473256.476	95	245722.171	473847.307
14	246285.69	470936.8	55	245888.318	473259.698	96	245530.419	473892.248
15	246327.499	470938.956	56	245893.382	473301.483	97	245511.145	473898.54
16	246455.115	470930.007	57	245909.356	473342.304	98	245514.548	473910.044
17	246462.049	470933.622	58	246032.94	473438.459	99	245474.214	473918.738
18	246185.523	471259.708	59	246050.78	473423.528	100	245471.313	473924.644
19	246126.453	471205.632	60	245999.036	473361.701	101	245467.193	473905.303
20	246140.447	471185.139	61	245978.038	473334.122	102	245472.842	473892.904
21	246184.796	471156.267	62	245933.487	473331.363	103	245503.969	473849.735
22	246210.516	471133.392	63	245923.678	473330.381	104	245538.605	473762.276
23	246245.29	471095.06	64	245916.996	473329.675	105	245571.355	473706.117
24	246250.657	471074.306	65	245927.095	473243.533	106	245618.847	473654.454
25	245651.32	471120.457	66	245935.104	473179.317	107	245688.212	473543.141
26	245662.514	471121.873	67	246127.764	471183.138	108	245721.379	473499.855
27	245678.688	471079.255	68	246180.372	471146.491	109	245755.961	473443.053
28	245667.494	471077.839	69	246212.519	471114.254	110	245788.993	473378.744
29	245936.851	471581.894	70	246240.004	471081.461	111	245838.415	473313.43
30	245955.523	471577.103	71	246260.433	470897.292	112	245884.754	473263.536
31	245951.815	471551.641	72	245772.146	470832.993	113	245889.466	473302.423
32	245932.265	471511.321	73	245760.972	470831.522	114	245905.369	473345.899
33	245932.024	471495.332	74	245793.667	470745.371	115	246118.253	473509.584
34	245940.875	471481.243	75	245804.825	470746.885	116	245887.177	473574.535
35	245964.848	471471.736	76	246265.197	470854.347	117	245789.565	473602.696
36	245990.191	471456.209	77	246275.795	470810.88	118	245751.977	473614.395
37	245997.997	471410.684	78	245752.469	473441.097	119	245700.21	473630.075
38	246012.479	471364.238	79	245718.074	473497.592	120	245677.523	473639.186
39	246021.673	471328.693	80	245684.92	473540.861	121	245653.707	473640.698
40	246031.736	471305.23	81	245615.649	473652.022	122	245651.618	473682.576
41	246048.902	471288.866	82	245593.158	473676.489	123	245675.244	473747.264
						124	245683.739	473744.125

S.C. DOCAD 2013 S.R.L. CLASA III Certificat de Autorizare: seria: RO-B-J. Nr. 0677		TRUP 2, 3, 6, 7, 9 - OHABA FORGACI - LOT28-29 SUPRAFATA 66.15 ha CAD: A476/2, PS475/2, A481, PS483, A462, PS470, PS29/2/1, PS25/1, PS17, PS19/1, PS475/1, A478/2, A478/3, P477, A476/1 BLDC FIZIC: 344, 1783, 1022, 1921, 1540, 1370, 228, 1858, 161	
SEF PROIECT	ING. DOBREAN MARIAN CLAUDIU	SCARA 1:5000	PLAN DE SITUATIE PLANS 1
INTOCMIT	ING. DOBREAN MARIAN CLAUDIU	FEBRUARIE 2017	
DESENAT	ING. DOBREAN MARIAN CLAUDIU		
VERIFICAT			



1	245816.884	470740.45	42	246073.535	471276.403	83	245584.347	473656.279
2	245812.873	470739.954	43	246090.177	471261.922	84	245716.339	473407.79
3	245912.797	470462.528	44	246098.661	471235.699	85	245850.95	473147.201
4	245933.184	470405.928	45	246112.868	471202.576	86	245907.43	473173.477
5	245937.295	470406.146	46	246122.734	471192.323	87	245887.671	473254.517
6	246278.112	470803.121	47	246112.642	471192.709	88	245835.347	473310.856
7	246340.423	470579.744	48	246069.212	471210.72	89	245785.594	473376.607
8	246352.705	470436.702	49	246042.483	471234.881	90	245458.311	473366.603
9	245685.158	471062.208	50	245927.348	471465.611	91	245714.32	473045.94
10	245746.599	470900.309	51	245916.835	471487.995	92	245719.722	473064.274
11	245735.442	470898.795	52	245914.244	471504.588	93	245726.131	473080.277
12	245673.963	471060.792	53	245911.339	473174.33	94	245733.1	473086.78
13	246266.343	470930.216	54	245891.311	473256.476	95	245722.171	473847.307
14	246285.69	470936.8	55	245888.318	473259.698	96	245530.419	473892.248
15	246327.499	470938.956	56	245893.382	473301.483	97	245511.145	473898.54
16	246455.115	470930.007	57	245909.356	473342.304	98	245514.548	473910.044
17	246462.049	470933.622	58	246032.94	473438.459	99	245474.214	473918.738
18	246185.523	471259.708	59	246050.78	473423.528	100	245471.313	473924.644
19	246126.453	471205.632	60	245999.036	473361.701	101	245467.193	473905.303
20	246140.447	471185.139	61	245978.038	473334.122	102	245472.842	473892.904
21	246184.796	471156.267	62	245933.487	473331.363	103	245503.969	473849.735
22	246210.516	471133.392	63	245923.678	473330.381	104	245538.605	473762.276
23	246245.29	471095.06	64	245916.996	473329.675	105	245571.355	473706.117
24	246250.657	471074.306	65	245927.095	473243.533	106	245618.847	473654.454
25	245651.32	471120.457	66	245935.104	473179.317	107	245688.212	473543.141
26	245662.514	471121.873	67	246127.764	471183.138	108	245721.379	473499.855
27	245678.688	471079.255	68	246180.372	471146.491	109	245755.961	473443.053
28	245667.494	471077.839	69	246212.519	471114.254	110	245788.993	473378.744
29	245936.851	471581.894	70	246240.004	471081.461	111	245838.415	473313.43
30	245955.523	471577.103	71	246260.433	470897.292	112	245884.754	473263.536
31	245951.815	471551.641	72	245772.146	470832.993	113	245889.466	473302.423
32	245932.265	471511.321	73	245760.972	470831.522	114	245905.369	473345.899
33	245932.024	471495.332	74	245793.667	470745.371	115	246118.253	473509.584
34	245940.875	471481.243	75	245804.825	470746.885	116	245887.177	473574.535
35	245964.848	471471.736	76	246265.197	470854.347	117	245789.565	473602.696
36	245990.191	471456.209	77	246275.795	470810.88	118	245751.977	473614.395
37	245997.997	471410.684	78	245752.469	473441.097	119	245700.21	473630.075
38	246012.479	471364.238	79	245718.074	473497.592	120	245677.523	473639.186
39	246021.673	471328.693	80	245684.92	473540.861	121	245653.707	473640.698
40	246031.736	471305.23	81	245615.649	473652.022	122	245651.618	473682.576
41	246048.902	471288.866	82	245593.158	473676.489	123	245675.244	473747.264
						124	245683.739	473744.125

S.C. DOCAD 2013 S.R.L. CLASA III Certificat de Autorizare: seria: RO-B-J. Nr. 0677		TRUP 2, 3, 6, 7, 9 - DHABA FORGACI - LOT28-29 SUPRAFATA 66.15 ha CAD: A476/2, PS475/2, A481, PS483, A462, PS470, PS29/2/1, PS25/1, PS17, PS19/1, PS475/1, A478/2, A478/3, P477, A476/1 BLDC FIZIC: 344, 1783, 1022, 1921, 1540, 1370, 228, 1858, 161	
SEF PROIECT	ING. DOBREAN MARIAN CLAUDIU		
INTOCMIT	ING. DOBREAN MARIAN CLAUDIU		
DESENAT	ING. DOBREAN MARIAN CLAUDIU	SCARA 1:5000	PLAN DE SITUATIE
VERIFICAT		FEBRUARIE 2017	PLANSA 2